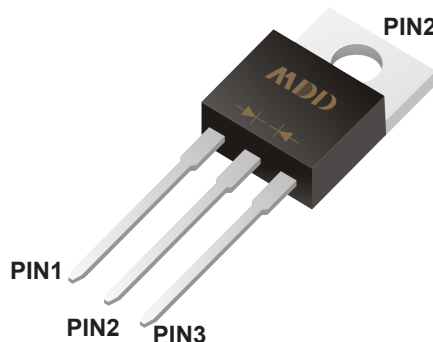


SCHOTTKY BARRIER RECTIFIER

Features

- ◆ The plastic package carries Underwriters Laboratory Flammability Classification 94V-0
- ◆ Construction utilizes void-free molded plastic technique
- ◆ Low reverse leakage
- ◆ High forward surge current capability
- ◆ High temperature soldering guaranteed: 250°C, 0.25" (6.35mm) from case for 10 seconds

TO-220AB



Mechanical Data

Case : JEDEC TO-220AB Molded plastic body

Terminals : Solder plated, solderable per MIL-STD-750, Method 2026

Polarity : Polarity symbol marking on body

Mounting Position : Any

Weight : 0.080 ounce, 2.24 grams

Maximum Ratings And Electrical Characteristics

Ratings at 25°C ambient temperature unless otherwise specified.

Single phase half-wave 60Hz, resistive or inductive load, for capacitive load current derate by 20%.

Parameter	SYMBOLS	MDD	MDD	MDD	MDD	MDD	UNITS
		MBR	MBR	MBR	MBR	MBR	
Marking Code		2045CT	2060CT	20100CT	20150CT	20200CT	
Maximum repetitive peak reverse voltage	V_{RRM}	45	60	100	150	200	V
Maximum RMS voltage	V_{RMS}	32	42	70	135	140	V
Maximum DC blocking voltage	V_{DC}	45	60	100	150	200	V
Maximum average forward rectified current (see fig.1)	$I_{(AV)}$	20.0					A
Peak forward surge current 8.3ms single half sine-wave superimposed on rated load (JEDEC Method)	I_{FSM}	200					A
Maximum instantaneous forward voltage at 10.0A	V_F	0.65	0.75	0.85	0.90	0.92	V
Maximum DC reverse current at rated DC blocking voltage $T_A=25^\circ\text{C}$ $T_A=100^\circ\text{C}$	I_R	1.0			0.02		mA
		15.0	50.0		50.0		
Typical thermal resistance (NOTE 2)	$R_{\theta JC}$	2.0			1.5		$^\circ\text{C/W}$
Operating junction temperature range	T_J	-55 to +150			-55 to +175		$^\circ\text{C}$
storage temperature range	T_{STG}	-55 to +150			-55 to +175		$^\circ\text{C}$

Note: 1. Measured at 1MHz and applied reverse voltage of 4.0V D.C.

2. Thermal resistance from junction to case.

Ratings And Characteristic Curves

Fig.1 Typical Forward Current Derating Curve

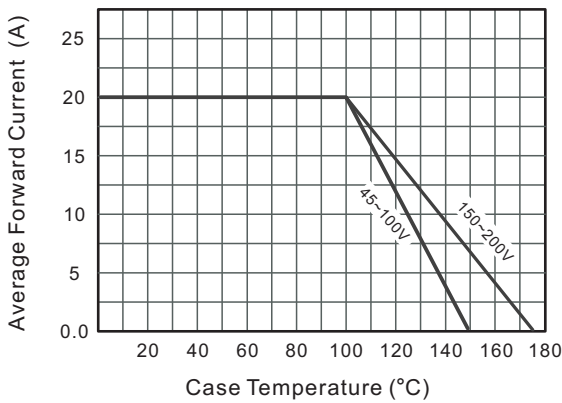


Fig.2 Typical Reverse Characteristics

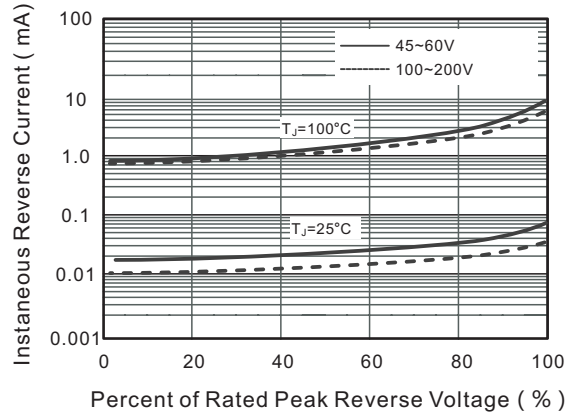


Fig.3 Typical Forward Characteristic(per leg)

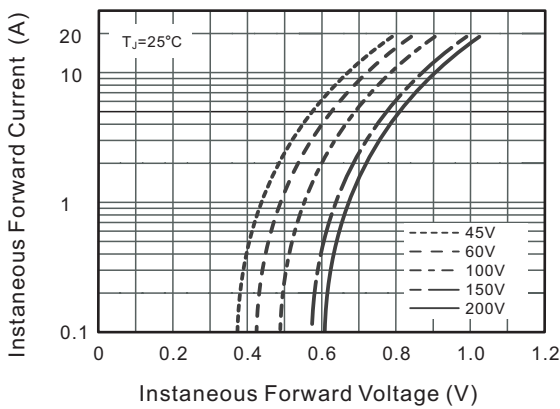
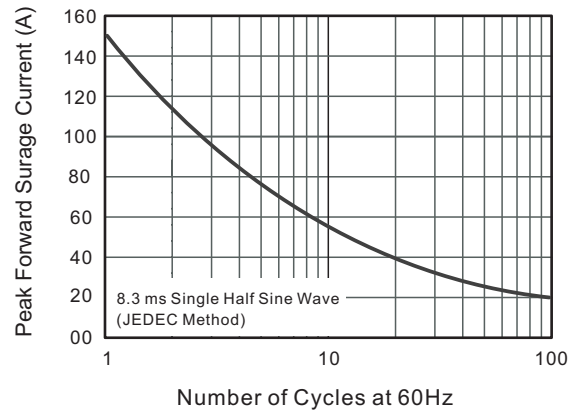


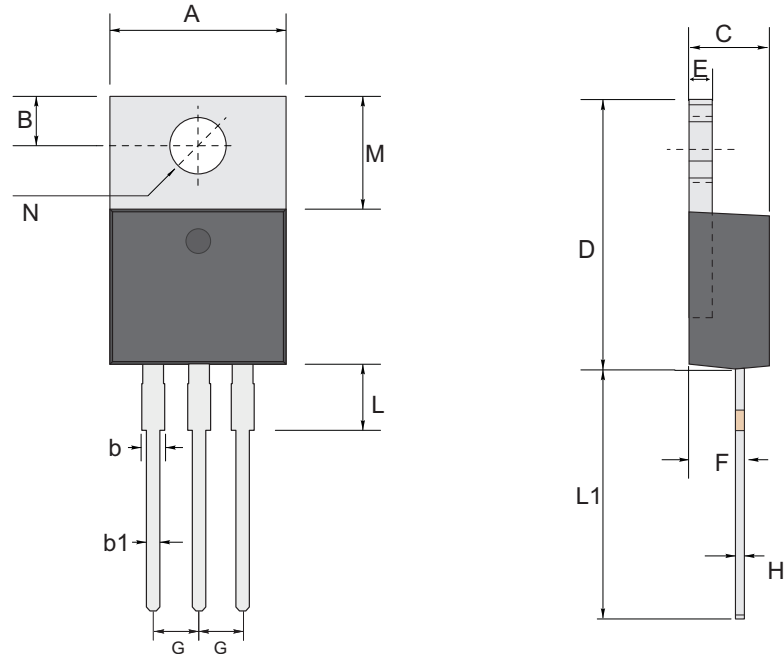
Fig.4 Maximum Non-Repetitive Peak Forward Surge Current



The curve above is for reference only.

Outline

TO-220AB Package Outline Dimensions



TO-220AB mechanical data

UNIT		A	B	b	b1	C	D	E	F	G	H	L	L1	M	N
mm	max	10.45	2.94	1.77	0.94	4.76	16.0	1.40	2.90	2.54 TYPICAL	0.64	4.2	14.79	6.60	3.86
	min	9.85	2.54	1.14	0.62	4.42	14.6	1.14	2.20		0.35	2.8	13.00	6.13	3.8

Important Notice and Disclaimer

Microdiode Electronics (Shenzhen) reserves the right to make changes to this document and its products and specifications at any time without notice. Customers should obtain and confirm the latest product information and specifications before final design, purchase or use.

Microdiode Electronics (Shenzhen) makes no warranty, representation or guarantee regarding the suitability of its products for any particular purpose, nor does Microdiode Electronics (Shenzhen) assume any liability for application assistance or customer product design. Microdiode Electronics (Shenzhen) does not warrant or accept any liability with products which are purchased or used for any unintended or unauthorized application.

No license is granted by implication or otherwise under any intellectual property rights of Microdiode Electronics (Shenzhen).

Microdiode Electronics (Shenzhen) products are not authorized for use as critical components in life support devices or systems without express written approval of Microdiode Electronics (Shenzhen).